

Bethlehem Christian Pre-School



17979 SW Stafford Road • Lake Oswego, Oregon 97034 • 503-638-0725
admin@bethlehempreschool.org • www.bethlehempreschool.org

Our Philosophy

To nurture the physical, social, cognitive, emotional, and spiritual development of our children.

Bethlehem Christian Pre-School is a ministry of Christian City Church providing a loving Christian environment with emphasis on the developmental stages of the child. We believe children learn as they play. We welcome children without regard to race, color, handicap, age, sex, or national origin.

Each room is staffed by one teacher and two assistants.

The teacher-child ratio is 1:4, 1:5, 1:6, and 1:7.



The Program



Pre-School is a place where children 2 1/2 to 5 years of age learn confidence, where curiosity is aroused and where exploration takes place.

Our program is open-ended. However, we have routines and a schedule that help the children know what will happen next and what is expected of them.

Creativity is at the center of our developmental program. Opportunities with art, media, science and nature, language and stories, numbers, music and movement, and Bible concepts, all combine for loving and energetic experiences. These lay the foundation for individual development and more formal schooling.

Active play is important for growing bodies. We have a large room equipped with mats and climbers for those days when weather prevents outdoor play on our complete playground.



Bethlehem Christian Pre-School has Bible time when a Bible story and related songs are learned. Christian character traits such as patience are emphasized each month. Children begin to see God's loving hand in the world around them.



17979 SW Stafford Road • Lake Oswego, Oregon 97034 • 503-638-0725
 admin@bethlehempreschool.org • www.bethlehempreschool.org



Bethlehem Christian Pre-School

Programs for Parents

Bethlehem Christian Pre-School has special events such as our Open Houses, Christmas Celebrations, Dad's Saturday, and Mother's Day Events. These are all popular occasions!

Parent Involvement

We always encourage all parents to visit and to help out in the classroom during the year. Your child will almost demand it! Field trips provide a great way in which to get involved.

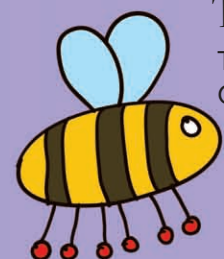


Snacks

Each parent is expected to take turns bringing a simple snack and juice. We keep sugared snacks to a minimum — mindful of good nutrition and the relationship between behavior and sugar intake. NOTE: BCP is an allergy-aware school.

Clothes

Children are more eager to participate at school when they aren't worrying about their clothes. Therefore, we recommend comfortable play clothes that launder easily. It is also helpful for children to wear clothes that are easily managed independently.



Toddlers

Toddlers are also welcome at Bethlehem Christian Pre-School. Our toddler program has a teacher/child ratio of 1:4 in a very safe and loving environment. Call 503-638-0725 for more specific information about this special program.



Lunch 'n Fun

Our Lunch 'n Fun program is an extended playtime from 12–3pm each day. Children bring a lunch from home and participate in a variety of fun activities. It is a wonderful option for those days when parents need extra childcare.

Lunch 'n Fun is available by reservation at the rate of \$4.95 per hour, and is staffed by a pre-school teacher and an assistant, with a maximum ratio of 1:10.

Tuition

Pre-School fees are payable to Bethlehem Christian Pre-School. A non-refundable enrollment fee is due upon registration. The tuition fee is due on the first of each month.

Pre-School Tuition

9 mo.–2 1/2 Years Old: M–F	
8:45–12:30: \$23.40	
12:30–3:30: \$18.75	
2 1/2 Years Old: T, TH - 9:15am–12pm	\$215/mo.
3 Years Old: T, TH - 9:15am–12pm	\$205/mo.
3 Years Old: M, W, F - 9:15am–12pm	\$280/mo.
Pre-K 4 Years Old: M, W, F - 9:15am–12pm	\$270/mo.
Pre-K Plus: M–TH - 9:15am–12pm	\$340/mo.
Art & Science: F - 9:15am–12pm	\$ 90/mo.
Enrichment: M or W - 12–3pm	\$ 90/mo.
Lunch 'n Fun	
12-3pm: \$4.95/hr.	
<i>For 3's, 4's, Pre-K only</i>	

Enrollment Fees

Pre-School	\$195
Toddler Care	\$ 75
Lunch 'n Fun only	\$ 30

